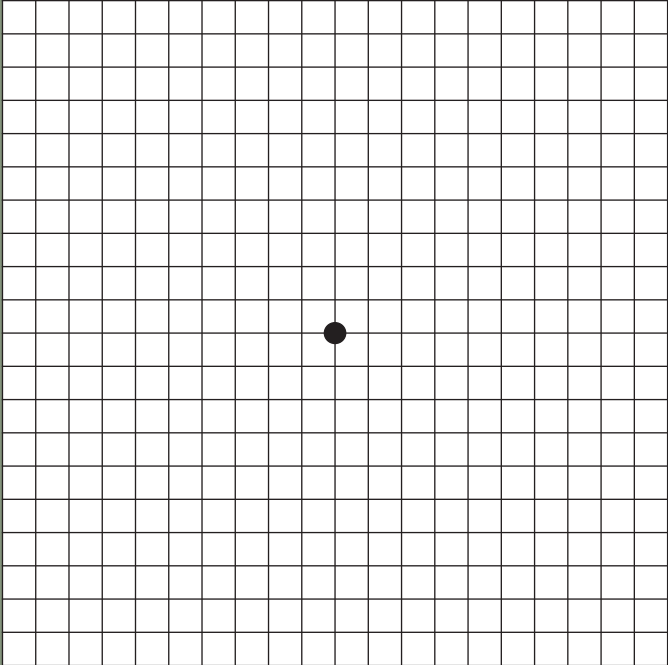


AMSLER RECORDING CHART



New Delhi • A-10, South Extension 2

Gurugram • 1791, Sector 52

+91 6262 999 333

synergycare.com



INSTRUCTIONS

- The chart is to be viewed in normal room illumination /light
- Place the chart at normal reading distance (28-38 cms)
- Wear the reading spectacles and view the chart with one eye covered
- Throughout the entire examination keep looking at the central fixation spot. Do not look anywhere else.

While looking at the central fixation spot. Check whether:

1. Is the centre spot visible?
2. While viewing the centre black spot, can you see all four sides?
3. Do you see the entire grid intact? Is any area within the grid not visible?
4. Are the horizontal and vertical lines straight and parallel?
5. Are all the squares of equal size and shape?

- If you notice any blurring or distortion of the lines, or you are unable to see any part of the grid, consult your ophthalmologist immediately.

New Delhi • A-10, South Extension 2

Gurugram • 1791, Sector 52

+91 6262 999 333

 synergyeye.com

 synergy | eye care